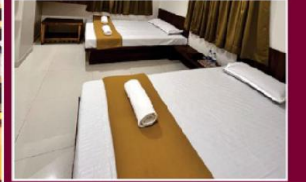
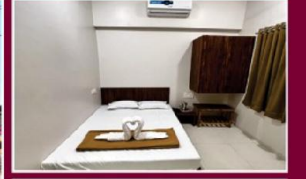


Kolhapur Darshan

- Ambabai (Mahalaxmi) Mandir • Bhavani Mandap Mandir Walking Distance. •
 - New Palace (2/5 Km) 10 Min •
- Panchganga River On The Way Jyotiba Mandir (20 Km) 35 Min. •
 - Panhala (22 Km) 35 Min. 5 Side Seen (20 km) 33 Min.
 - Rankala To Hotel (1 Km) 5 Min.

Kolhapur City

- Basva Nandi Kailasgad Swari. → Town Hall Chh. Shahu Samadhi Point.
- Chh. Shahu Janmshthal → Karvir Darshan. → Chinmay Ganpati (15 Km) 27 Min.
- Kanerimath (23 Km) 30 Min. → On The Way Renuka Mandir. → Ganesh Mandir.
 - Narsobawadi Datt Mandir (44 Km) 1hr 10 Min
- Khidrapur (Kopeswar Mandir) (20 Km) 32 Min. → Way To Hotel (62km) 1 Hr 20
- Admapur (balumama Mandir) (48 Km) 57 Min.
- Radhanagri Wildlife Sanctuary Safari (50 Km) 1 Hour To Dajipur (23 Km) 30 Min.



HOTEL™
DARSHAN 
EXECUTIVE

3135, A Ward, infront of Babujamal Talim,
Near Mahalaxmi Multilevel Car Parking, Kolhapur - 416 012.

☎ 0231-2645559 | 8962645559

PURE VEG RESTAURANT

Dining In Terrace

► BREAKFAST

BREAD BUTTER	20
BREAD BUTTER TOST	25
BREAD BUTTER JAM / TOAST	35
EXTRA BREAD	10
VEG. TOAST SANDWICH	50
VEG. SANDWICH	40
VEG. CHEESE SANDWICH	50
SABU KHICHADI	25
UPMA	25
SHIRA	25
POHE	25
MAGGIE	30
KOLHAPURI MISAL	70
DAHI WADA	35
IDLI WADA SABHAR	40
TATI IDLI	60
FULL SIZE IDLI WADA	50

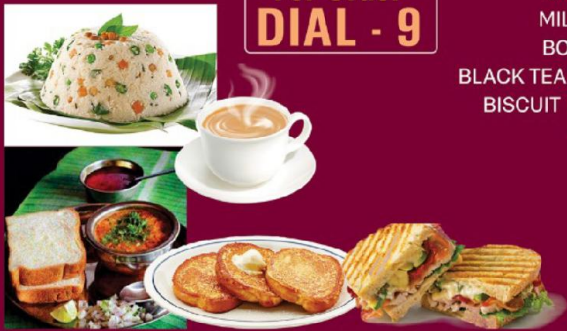
► COLD BEVERAGE

MINERAL WATER	20
SODAL KINLEY 250 ML	20
THUMS UP -250 ML	25
SPRITE 250 ML	25
CHARGED 250 ML	25
LIMCA SPORTZ	25
MAAZA	10.
LEMON JUICE	20.
RUHAFZA	30
KOKAM SHARBHAT	15
MASALA KOKAM	25
LASSI	25
BUTTER MILK	15

► HOT BEVERAGE

TEA	20
SPL. TEA	30
COFFEE	30
GREEN TEA	30
MILK GLASS	30
BOURNVITA	40
BLACK TEA (LEMON)	30
BISCUIT PARLE-G	10
GOODAY	10

For Order
DIAL - 9



Soup

Tomato	75/-
Manchow	85/-

Starters

Finger Chips	90/-
Veg / gobi Manchurian	190/-
Panner Chilly	235/-
Panner 65	235/-

Main Course

Chief's Special Veg (Two Dishes)	310/-
<small>(Mix Veg, Red Grevy spicy and Panner, kaju mater, White grevy sweet.)</small>	
Veg Kolhapuri	235/-
<small>(Mix Vegetables, Red gravy spicy.)</small>	
Veg Kothimbiri	240/-
<small>(Mix veg with panner, green grevy medium spicy.)</small>	
Veg Makhanwala	255/-
<small>(Mix veg with panner red grevy sweet and spicy.)</small>	
Veg Handi	225/-
<small>(Mix veg with panner, Brown gravy medium spicy.)</small>	
Veg Maratha	245/-
<small>(Mix veg with Panner, Red gravy spicy.)</small>	
Kaju Masala	320/-
<small>Brown grevy, medium spicy.</small>	
Veg Jaipuri	265/-
<small>(Mix veg, julian cutting, White grevy sweet.)</small>	
Panner Tikka Masala	300/-
<small>(Roasted panner, red grevy (Medium Sweet & Sharpest)</small>	
Panner Butter Masala	300/-
<small>(Cube cutting panner, Fry Onion capsicum with Red Gravy (Sweet & Sharpest)</small>	
Panner Chingari	300/-
<small>(Fry finger cutting panner, Red gravy spicy.)</small>	
Palak Paneer	265/-
<small>(panner cub's, palak gravy.)</small>	
Panner Kaju Masala	320/-
<small>(Mix panner Kaju, brown gravy, medium spicy.)</small>	
Panner Handi	290/-
<small>(Cube cutting panner, Fry Onion Capsicum with brown gravy, medium spicy)</small>	
Panner Ruchira	300/-
<small>(Fry Finger Cutting panner and Capsicum with deiced red gravy spicy)</small>	

Jain Special

Veg Makhanwala	265/-
<small>Mix Veg jain Style with makhani gravy</small>	
Paneer Bhurgi	320/-
<small>Gratted panner tossed in green chilly medium spicy dry.</small>	
Panner Kaju masala	330/-
<small>panner and kaju With brown grevy</small>	
Paneer Tikka masala	320/-
<small>Roasted panner, red grevy semi spicy.</small>	
Vej Jaipuri	280/-
<small>Julian cutting vegetable, White grevy sweet</small>	

Maharastrian

Akha Masur	170/-
Alu Jira	170/-
Methi Besan	195/-
Bainan Masala	185/-
Bhendi Fry	190/-

Roti

Roti Plain / Butter	30 / 35
Chapati	25/-
Wheet Roti Plain / Butter	37 / 42

Dal

Dal Fry	160/-
Dal Tadaka	170/-

Rice

Plane Rice	140 / 95
Jeera Rice	160 / 100
Dal Khichadi	220/-
Spl. Dum Biryani (7pm to 11pm.)	275/-

Chinese Menu

Veg Hakka Noodles	175/-
Veg Schezwan Noodles	185/-
Veg Fried Rice	185/-
Veg Schezwan Rice	200/-

TIME 11.30 am to 4.00 pm
6.30 pm to 10.30 pm

For Order Dial - 9